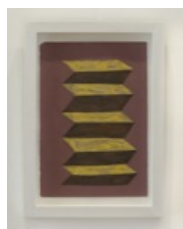


Paintings on Paper
537 W. 20th St., 2nd Floor
June 26 - August 15, 2014

Reception



Ben Berlow
Untitled, 2013
Gouache on paper
8 7/8 x 6 inches
22.5 x 15.2 cm
12 x 9 x 1 1/4 inches (framed)
30.5 x 22.9 x 3.2 cm
Signed verso
BERBE0012



Ben Berlow
Untitled, 2013
Gouache on paper
7 1/4 x 5 inches
18.4 x 12.7 cm
9 1/4 x 6 5/8 x 3/4 inches (framed)
23.5 x 16.8 x 1.9 cm
Signed verso
BERBE0013



Ben Berlow
Untitled, 2013
Gouache on paper
7 3/8 x 4 3/4 inches
18.7 x 12.1 cm
9 1/4 x 6 5/8 x 3/4 inches (framed)
23.5 x 16.8 x 1.9 cm
Signed verso
BERBE0014



Ben Berlow

Untitled, 2013

Gesso, graphite, and gouache on paper

7 3/4 x 5 inches

19.7 x 12.7 cm

11 1/4 x 8 3/4 x 1 1/4 inches (framed)

28.6 x 22.2 x 3.2 cm

Signed verso

BERBE0015



Ben Berlow

Untitled, 2013

Casein, house paint, and graphite on paper

8 x 8 1/2 inches

20.3 x 21.6 cm

13 3/8 x 10 7/8 x 3/4 inches (framed)

34 x 27.6 x 1.9 cm

Signed verso

BERBE0018



Ben Berlow

Untitled, 2013

Collage, graphite, gouache, and ink on paper

8 x 5 1/2 inches

20.3 x 14 cm

11 3/4 x 8 3/4 x 1 1/4 inches (framed)

29.8 x 22.2 x 3.2 cm

Signed verso

BERBE0016



Ben Berlow

Untitled, 2013

Casein and graphite on paper

7 1/2 x 8 3/4 inches

19.1 x 22.2 cm

10 7/8 x 13 1/4 x 3/4 inches (framed)

27.6 x 33.7 x 1.9 cm

Signed verso

BERBE0017



Mary Heilmann

Shore Break, 2014

Acrylic on handmade paper

13 3/4 x 10 1/2 inches

34.9 x 26.7 cm

Paper by Ruth Lingen/Akemi Martin, Pace Paper

Signed, titled, and dated verso

HEIMA0029

Main Gallery



Ad Reinhardt

Untitled, ca. 1949

Gouache and oil on Strathmore card

23 x 28 3/4 inches

58.4 x 73 cm

29 1/2 x 35 1/2 x 1 1/2 inches (framed)

74.9 x 90.2 x 3.8 cm

REIAD0121



Paulo Monteiro

Untitled, 2012

Watercolor on paper

6 3/4 x 9 3/4 inches

17.1 x 24.8 cm

13 x 15 3/4 x 1 3/8 inches (framed)

33 x 40 x 3.5 cm

Signed and dated lower left recto

MONPA0003



Paulo Monteiro

Untitled, 2012

Watercolor on paper

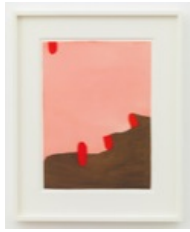
15 1/4 x 10 3/8 inches

38.7 x 26.4 cm

21 1/2 x 16 1/2 x 1 3/8 inches (framed)

54.6 x 41.9 x 3.5 cm

MONPA0007



Paulo Monteiro
Untitled, 2012
Watercolor on paper
14 15/16 x 10 15/16 inches
37.9 x 27.8 cm
21 1/8 x 17 x 1 3/8 inches (framed)
53.7 x 43.2 x 3.5 cm
Signed and dated lower left recto
MONPA0001



Paulo Monteiro
Untitled, 2012
Gouache and watercolor on paper
11 x 7 1/2 inches
28 x 19 cm
17 1/4 x 13 5/8 x 1 3/8 inches (framed)
43.8 x 34.6 x 3.5 cm
Signed and dated lower left recto
MONPA0005



Rebecca Morris
Untitled (#219-13), 2013
Ink and watercolor on paper
23 15/16 x 17 13/16 inches
60.8 x 45.2 cm
27 5/8 x 21 1/2 x 1 1/2 inches (framed)
70.2 x 54.6 x 3.8 cm
Signed, titled, dated, and inscribed verso
MORRE0007



Rebecca Morris
Untitled (#154-13), 2013
Ink and watercolor on paper
16 1/8 x 12 13/16 inches
41 x 32.5 cm
20 x 16 x 1 1/2 inches (framed)
50.8 x 40.6 x 3.8 cm
Signed, titled, dated, and inscribed verso
MORRE0006



Rebecca Morris

Untitled (#292-13), 2013

Ink and watercolor on paper

20 x 14 3/16 inches

50.8 x 36 cm

23 5/8 x 18 x 1 1/2 inches (framed)

60 x 45.7 x 3.8 cm

Signed, titled, dated, and inscribed verso

MORRE0010



Raoul De Keyser

Untitled, 1997

Watercolor on paper

14 1/8 x 8 1/4 inches

35.9 x 21 cm

19 1/2 x 13 3/4 inches (framed)

49.5 x 34.9 cm

Signed and dated lower left recto

DEKRA0237



Raoul De Keyser

Untitled, 1999

Watercolor on paper

9 x 12 1/4 inches

22.9 x 31.1 cm

16 1/2 x 20 1/2 x 1 3/8 inches (framed)

41.9 x 52.1 x 3.5 cm

Initialed and dated lower right recto

DEKRA0019A



Stanley Whitney

Untitled, 2013

Gouache on paper

22 x 30 1/8 inches

55.9 x 76.5 cm

17 1/8 x 21 1/4 x 1 3/8 inches (framed)

43.5 x 54 x 3.5 cm

Signed, dated, and inscribed verso

WHIST0013



Stanley Whitney
Untitled, 2013
Gouache on paper
22 x 30 1/4 inches
55.9 x 76.8 cm
17 1/8 x 21 1/4 x 1 3/8 inches (framed)
43.5 x 54 x 3.5 cm
Signed, dated, and inscribed verso
WHIST0010



Raoul De Keyser
Untitled, 2000
Pencil and watercolor on paper
8 7/16 x 12 5/8 inches
21.5 x 32 cm
13 1/2 x 17 3/4 x 1 3/8 inches (framed)
34.3 x 45.1 x 3.5 cm
Initialed and dated lower right recto; signed, dated, and
inscribed verso
DEKRA0253



Raoul De Keyser
Untitled, 2000
Pencil and watercolor on paper
7 1/16 x 4 7/8 inches
17.9 x 12.2 cm
12 1/8 x 9 7/8 x 1 3/8 inches (framed)
30.8 x 25.1 x 3.5 cm
Initialed and dated lower recto; signed, dated, and
inscribed verso
DEKRA0254



Raoul De Keyser
Untitled, 1999
Watercolor and pencil on paper
12 3/4 x 17 inches
32.4 x 43.2 cm
22 3/8 x 26 1/4 inches (framed)
56.8 x 66.7 cm
Initialed lower right recto
DEKRA0103

South Gallery



Ilse D'Hollander
Untitled, 1996
Gouache on paper
6 7/8 x 5 1/8 inches
17.5 x 13 cm
13 x 11 x 1 inches (framed)
33 x 27.9 x 2.5 cm
DHOIL0004



Ilse D'Hollander
Untitled, 1996
Gouache on paper
6 3/4 x 4 1/2 inches
17.1 x 11.4 cm
13 x 11 x 1 inches (framed)
33 x 27.9 x 2.5 cm
DHOIL0003



Ilse D'Hollander
Untitled, 1996
Gouache on paper
6 3/4 x 4 1/2 inches
17.1 x 11.4 cm
12 7/8 x 11 x 1 inches (framed)
32.7 x 27.9 x 2.5 cm
DHOIL0002



Ilse D'Hollander
Untitled, 1996
Gouache on paper
6 7/8 x 5 inches
17.5 x 12.7 cm
13 x 11 x 1 inches (framed)
33 x 27.9 x 2.5 cm
DHOIL0005



Ilse D'Hollander
Untitled, 1996
Gouache on paper
7 x 5 inches
17.8 x 12.7 cm
13 x 11 x 1 inches (framed)
33 x 27.9 x 2.5 cm
DHOIL0007



Ilse D'Hollander
Untitled, 1996
Gouache on paper
6 7/8 x 5 inches
17.5 x 12.7 cm
13 x 11 x 1 inches (framed)
33 x 27.9 x 2.5 cm
DHOIL0006



James Bishop
Untitled, 2009
Oil and crayon on paper
4 3/4 x 4 1/4 inches
12.3 x 10.8 cm
15 x 15 x 1 inches (framed)
38.1 x 38.1 x 2.5 cm
BISJA0023



James Bishop
Untitled, 2011
Oil and crayon on paper
4 x 4 1/2 inches
10 x 11.3 cm
16 1/2 x 16 1/2 x 1 inches (framed)
41.9 x 41.9 x 2.5 cm
BISJA0022



Ad Reinhardt

Number 2, 1949-1950

Gouache, oil, and watercolor on paper

22 1/2 x 31 inches

57.2 x 78.7 cm

29 x 37 1/2 x 1 1/2 inches (framed)

73.7 x 95.3 x 3.8 cm

Signed verso

REIAD0128



Rebecca Morris

Untitled (#300-13), 2013

Ink and watercolor on paper

23 15/16 x 17 13/16 inches

60.8 x 45.2 cm

27 5/8 x 21 1/2 x 1 1/2 inches (framed)

70.2 x 54.6 x 3.8 cm

Signed, titled, dated, and inscribed verso

MORRE0011



Rebecca Morris

Untitled (#131-14), 2014

Ink and watercolor on paper

23 15/16 x 17 13/16 inches

60.8 x 45.2 cm

27 5/8 x 21 1/2 x 1 1/2 inches (framed)

70.2 x 54.6 x 3.8 cm

Signed, titled, dated, and inscribed verso

MORRE0012

North Gallery



Al Taylor

[no title], ca. 1984-1985

Acrylic paint on newsprint

12 7/16 x 9 11/16 inches

31.6 x 24.6 cm

18 1/2 x 15 9/16 x 1 3/8 inches (framed)

47 x 39.5 x 3.5 cm

Estate of Al Taylor No. AT (D-85.160)

TAYAL0534



Al Taylor

[no title], ca. 1984-1985

Acrylic paint on newsprint

12 1/2 x 10 1/4 inches

31.8 x 26 cm

18 5/8 x 16 1/4 x 1 3/8 inches (framed)

47.3 x 41.3 x 3.5 cm

Estate of Al Taylor No. AT (D-85.131)

TAYAL1029



Al Taylor

[no title], ca. 1984-1985

Acrylic paint on newsprint

12 1/2 x 9 13/16 inches

31.8 x 24.9 cm

18 5/8 x 16 1/4 x 1 1/2 inches (framed)

47.3 x 41.3 x 3.8 cm

Estate of Al Taylor No. AT (D-85.152)

TAYAL1030



Al Taylor

[no title], ca. 1982/1985

Acrylic paint on newsprint

12 7/16 x 9 13/16 inches

31.6 x 24.9 cm

18 5/8 x 16 1/4 x 1 1/2 inches (framed)

47.3 x 41.3 x 3.8 cm

Estate of Al Taylor No. AT (D-85.089)

TAYAL1028



Al Taylor

[no title], ca. 1982/1985

Acrylic paint on newsprint

12 1/2 x 10 1/8 inches

31.8 x 25.7 cm

18 5/8 x 16 1/4 x 1 1/2 inches (framed)

47.3 x 41.3 x 3.8 cm

Estate of Al Taylor No. AT (D-85.180)

TAYAL1031



Suzan Frecon

darkened water (Rumi), 2014

Watercolor on found agate-burnished old Indian ledger
paper

9 7/8 x 12 7/8 inches

25.1 x 32.7 cm

16 x 18 3/4 x 1 3/4 inches (framed)

40.6 x 47.6 x 4.4 cm

Signed and titled verso

FRESU0257



Suzan Frecon

curved and angled terre verte over ochre, 2014

Watercolor on single-weight agate-burnished Indian jute
paper

11 3/8 x 15 3/4 inches

28.9 x 40 cm

17 1/2 x 21 3/4 x 1 3/4 inches (framed)

44.5 x 55.2 x 4.4 cm

Signed, titled, and inscribed verso

FRESU0262



Suzan Frecon

*quadrants and fans composition generated by paper
support (4)*, 2014

Watercolor on single-weight agate-burnished Indian jute
paper

11 1/2 x 16 1/2 inches

29.2 x 41.9 cm

17 1/2 x 22 1/2 x 1 3/4 inches (framed)

44.5 x 57.2 x 4.4 cm

Signed, titled, and inscribed verso

FRESU0261



Suzan Frecon

quadrant/fan compositions, 2, 2014

Watercolor on found agate-burnished old Indian rag ledger paper

9 3/4 x 12 1/4 inches

24.8 x 31.1 cm

15 3/4 x 18 1/4 x 1 3/4 inches (framed)

40 x 46.4 x 4.4 cm

Signed, titled, and inscribed verso

FRESU0258



Al Taylor

Rat Guards (Palms I-V), 1998

Gouache, ink, and acrylic mica mortar on paper in five (5) parts

54 1/8 x 73 inches (overall)

137.5 x 185.4 cm

61 x 76 x 2 5/8 inches (framed, overall)

154.9 x 193 x 6.7 cm

Estate of Al Taylor No. AT (D-98.188)

TAYAL0501



Mary Heilmann

Negative Space One, 2014

Acrylic on handmade paper

11 1/2 x 11 1/2 inches

29.2 x 29.2 cm

Signed, titled, and dated verso

HEIMA0027



Mary Heilmann

Negative Space Two, 2014

Acrylic on handmade paper

12 x 15 inches

30.5 x 38.1 cm

Signed, titled, and dated verso

HEIMA0028



Stanley Whitney

Untitled, 2009

Gouache on Fabriano paper

11 x 11 inches

27.9 x 27.9 cm

17 x 17 x 1 3/8 inches (framed)

43.2 x 43.2 x 3.5 cm

Signed, dated, and inscribed verso

WHIST0005



Stanley Whitney

Untitled, 2009

Gouache on Fabriano paper

11 x 15 1/4 inches

27.9 x 38.7 cm

17 1/8 x 21 1/4 x 1 3/8 inches (framed)

43.5 x 54 x 3.5 cm

Signed, dated, and inscribed verso

WHIST0007